

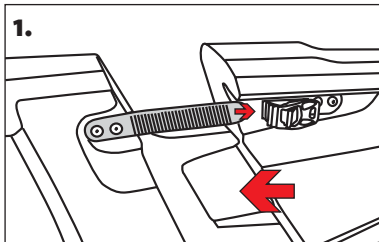
Tequila!

Point 65 Sweden

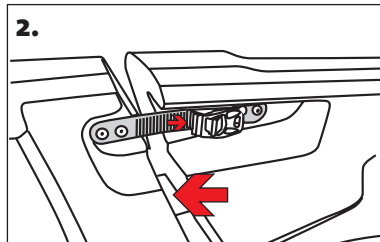
Manual

This manual will help you with the basics of putting your Tequila! together for your next paddling experience. After some practice it takes literally 10 seconds to assemble your Tequila!. To take it apart you only need to reverse the process. Please read the warning sticker on your kayak for a safe and fun paddling experience. You will also find instructional films on www.point65.com

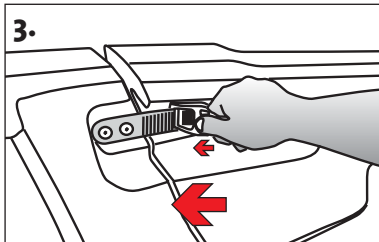
happy paddling!



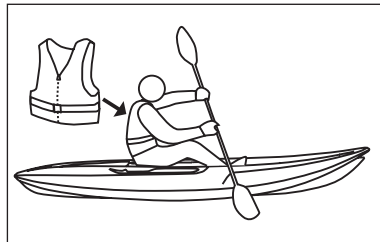
Place ratchet strap in correct position in buckle on both sides of the kayak



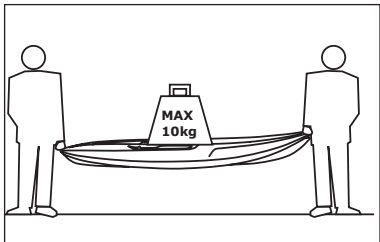
Push both parts of the kayak together, so that they slide easily together



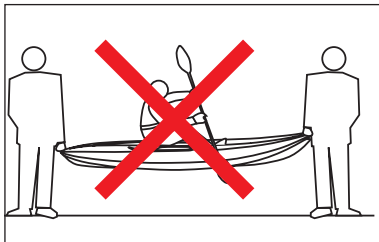
Pump buckle lever on both sides of kayak to close gap between parts. Do not overload buckle, this can damage the ratchet strap.



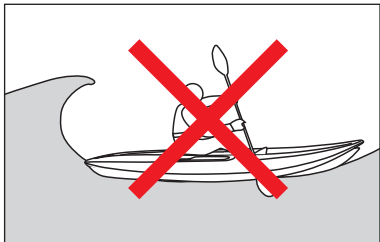
Always use a personal flotation device when paddling. Read warning sticker on kayak before usage.



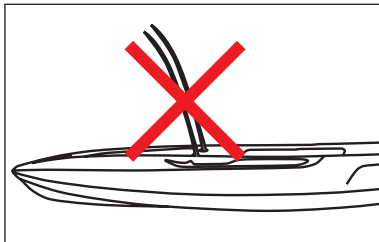
Never place heavy objects in the kayak while carrying, this can damage the locking system.



Never carry or drag the kayak with someone sitting in the kayak, this can damage the locking system.



Never paddle the kayak in surf larger than 3 feet in Tandem or 5 feet in Solo, this can lead to damage in the locking system.



The round recesses behind seats are for backrests only. Never use them for fishing poles or similar objects.

POINT 65°N
Kayaks SWEDEN

www.point65.com